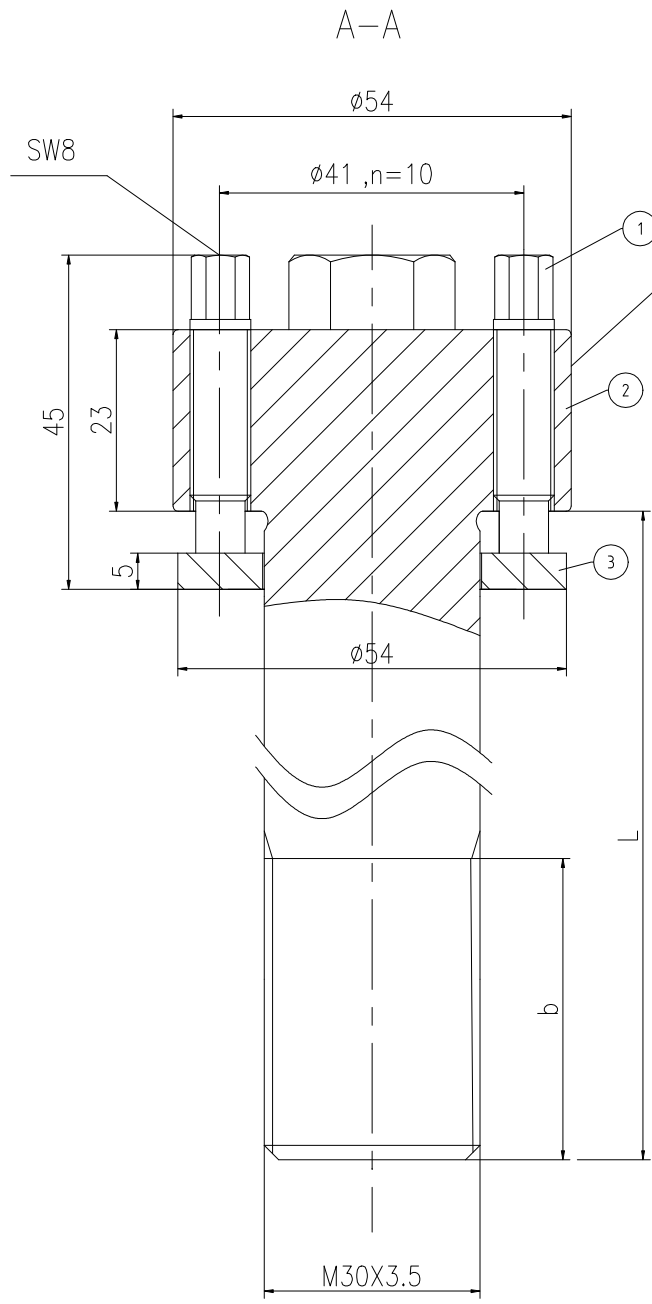
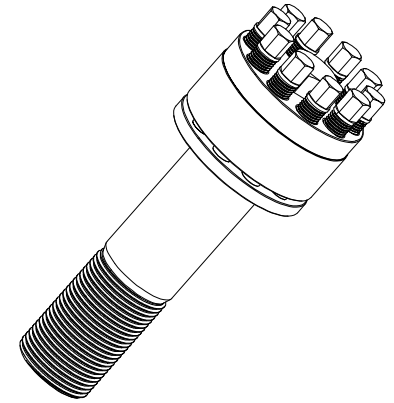
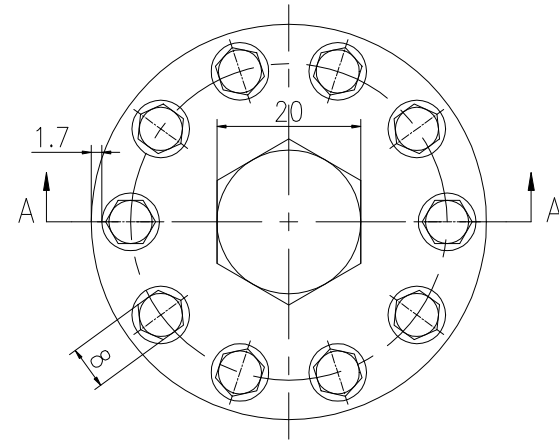


Unmarked tolerances shall be implemented in accordance with ISO 2768-mk.				
1-6 H/1	>6-30 H/2	>30-120 H/3	>120-400 H/5	>400-1000 H/8

		REVISION HISTORY		
REV	DESCRIPTION	DWG CHECK	APPR BY	APPR DATE



Logo  
 PSN:model  
 NO:drawing number  
 NOM torque:\*\*  
 NOM preload:\*\*  
 MAX:max preload



PARTS LIST					
PART	DWG NO.	QTY	DESCRIPTION	MATERIAL	WEIGHT(kg)
1	BBS9.520401	10	Bolt 3/8-20UNF-40	CrNiMo	0.02 /pcs
2	BS303.551H-1	1	S-BOLT M30X3.5	CrNiMo	/
3	BS303.551H-3	1	Gasket 30.5X54X5	CrNiMo	0.06

During on-site installation, please adjust the torque in conjunction with the bolt stretching distance. Without our authorization, the drawings shall not be shared with any third party, and we reserve the right to pursue legal liability against those who disclose the drawings to external parties.

NOM TORQUE	37 NM
NOM PRELOAD	286 KN
MAX PRELOAD CAPACITY	317 KN
LUBRICANT	G-N PLUS
TEMPERATURE RATING	-25 C~250 C

上海康普曼传动机械有限公司		+86 021-61301856	
KPM Power Transmission (Shanghai) Co.,Ltd		Liang.Guo@kpmdrive.com.cn	
DESIGNED: DAYE: 2025.12.02	BSH-30X3.5	WEIGHT: /kg	
REVIEWED: DAYE: 2025.12.02		STATE:	
DRAWN: DAYE:	DWG NO: BS303.551H	SHEET: 1:1	PRELIMINARY APPROVED

The dimensions at B and L positions are tailored to the customer's specific requests

DWG NO: BS303.551H  
 SHEET: 1:1